



Global Course: Spatial Planning and Institutional Design

Introduction Lecture
Dr. Gwenda van der Vaart
University of Groningen
20-04-2020





Introduction



Global Course

Partners:

Groningen University

University of Tokyo

Newcastle University,

University of Washington, Seattle

Renmin University of China

University of Groningen



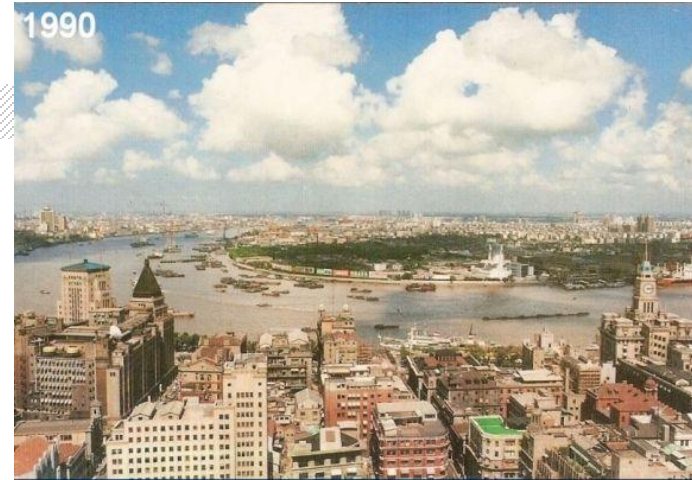
University of Washington





university of
groningen

Renmin University of China



Newcastle University



University of Tokyo



Global Course is truly international

- › Lectures are recorded and streamed at five top universities on three continents.
- › Group assignment with collaboration with fellow students from around the globe.





Virtual classroom: globalcourse.planning.eu

globalcourse.inplanning.eu

- Course information
- Online Lectures
- About the Organization
- Products
- Contact



Global Course

Partners:
University of Groningen
University of Tokyo
Newcastle University
University of Washington, Seattle
Renmin University of China



Course Information



Introduction
& Course
Manual



Assignment



Timetable



Nine cells
model



Literature
list



About the Global Course

Two central questions:

1. What are institutions and which historic, economic and cultural factors explain their existence?
2. How and why does the institutional context differ between the participating countries?

Context-dependent





About the Global Course

Course aim: create awareness among planning students that:

- › spatial interventions are rooted in institutional settings, and institutional changes might have spatial outcomes as well
- › spatial design cannot do without institutional design.

Intended learning outcomes

- › **Juxtapose** some of the most influential writings on Institutional Design with a focus on the discipline of planning
- › **Understand** the mechanisms underlying different institutional settings and planning frameworks in countries around the globe.
- › **Apply** different perspectives on Institutional Design on a real-life case study.
- › **Reflect** on institutional settings in your home country, by considering different perspectives and international planning practices.
- › **Cooperate** with people from different cultural backgrounds and institutional systems.



Two narratives

- › Theoretical-oriented
- › Practice-oriented

Theoretical narrative

- › Institutions
 - are influenced by history, culture and economy on various scale levels.
 - are the result of decision-making processes, democratic procedures, collective behavior and power struggles between public and private bodies, official and unofficial, and institutional and individual actors.
- › Nature of Institutions explained from different perspectives: institutional economics, political economy, path dependency, and (in)formal institutions.

Practice-oriented narrative

- › International-comparative approach on planning systems, based on an overview of the institutional context of the participating countries.
- › Local context, explain how spatial planning system is established
- › What is ultimately the goal of spatial planning and spatial interventions?





Role of each University

- › Each University:
 - › represents a specific institutional background
 - › provides 2 lectures: theoretical narrative & practice-oriented narrative
- › Web-lectures
- › Virtual classroom <http://globalcourse.inplanning.eu>
- › Group Assignment
- › Diverse and intellectually stimulating environment

University of Groningen (Netherlands)



Lecture: Introduction to Institutional Design and Spatial Planning

Lecture: Country overview NL: Dutch spatial planning: too good to be true?

Newcastle University (United Kingdom)



Lecture: Understanding spatial planning from a political economy perspective

Lecture: Country overview
UK: Institutional Design
and the Historic
Environment – The British
Conservation Planning
System.

University of Tokyo (Japan)



Department of Civil Engineering

Lecture: Introduction to Land Use Planning in Japan: Understanding How the Japanese Urban Environment is Shaped.

Lecture: Country overview Japan: Making of Urban Tokyo and Urban Planning system in Japan.

Renmin University (China)



Department of Urban Planning and Management

Lecture 7. Spatial Planning System in China: Structure, Agency and Path Dependence

Lecture 8. Understanding the role of the planner in reshaping urban landscape in China.

University of Washington (USA)



Department of Urban Design and Planning

Lecture 9. Understanding spatial planning from an institutional economics perspective

Lecture 10. Country overview USA: Evaluating the Role of Local Government in the USA

Group Assignment

- › Cooperate with colleagues from all over the globe.
- › Apply an international-comparative approach to a specific topic and investigate how and why the institutional settings are different in different geographical contexts.
- › Groups of approx. 10 students (2 from each participating institution) work on the same topic.

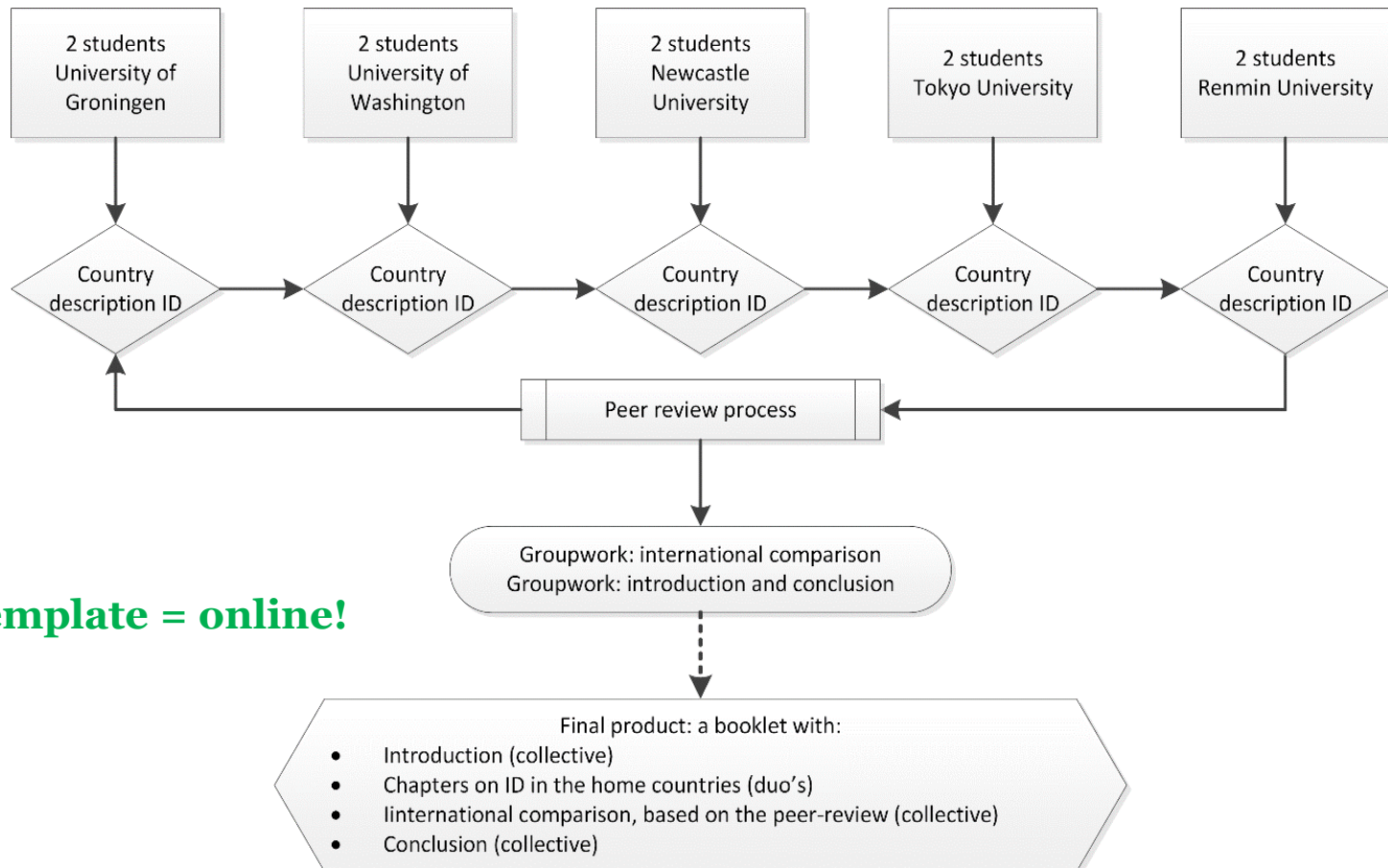
› Topics:

- * *Shortage or nuisance of car parking*
- * *(Over)tourism / versus local culture*
- * *Vibrant university campuses*
- * *Urban heritage conservation*

- * *Energy transition of housing*
- * *Urban regeneration*
- * *Sports facilities*



Group Assignment



Detailed template = online!



Group Assignment

- › First deadline May 18 23:59 GMT (country chapter draft)
- › Second deadline May 25 23:59 GMT (peer-review)
- › Final deadline June 10 23:59 GMT (comparative analysis)
- › Use digital technology to discuss and operate in an international setting.

Ethics

- › Fully taught and evaluated in English
- › **Interactions** with colleagues from around the globe, which involves unexpected encounters with new ideas that might challenge your own worldview, or the dominant way of thinking about spatial planning in your country.



Ethics

- › Understanding of different institutional settings contributes to a better understanding of the structural powers that shape the institutional environment of students' home base.
- › Consideration each other's traditions, manners and work method - inclusiveness, open-mindedness, and embracing and learning with diversity.





› Any questions?

globalcourse.inplanning.eu

or ask your professors

g.van.dervaaart@rug.nl

b.j.wind@rug.nl

Next: dr. Barend Wind on Institutions and Planning



Group Assignment

› Topics:

- * *Shortage or nuisance of car parking*
- * *(Over)tourism / versus local culture*
- * *Vibrant university campuses*
- * *Urban heritage conservation*

- * *Energy transition of housing*
- * *Urban regeneration*
- * *Sports facilities*

› In total: 5 Local Groups from Groningen:

- › 4 groups of three students
- › 1 group of two students

› @RUG: 70% group assignment, 30% exam